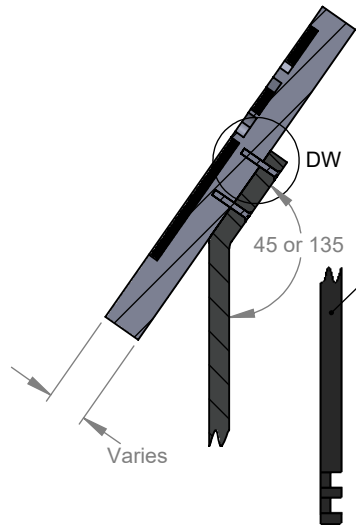


PRODUCT CONSTRUCTION EXAMPLE

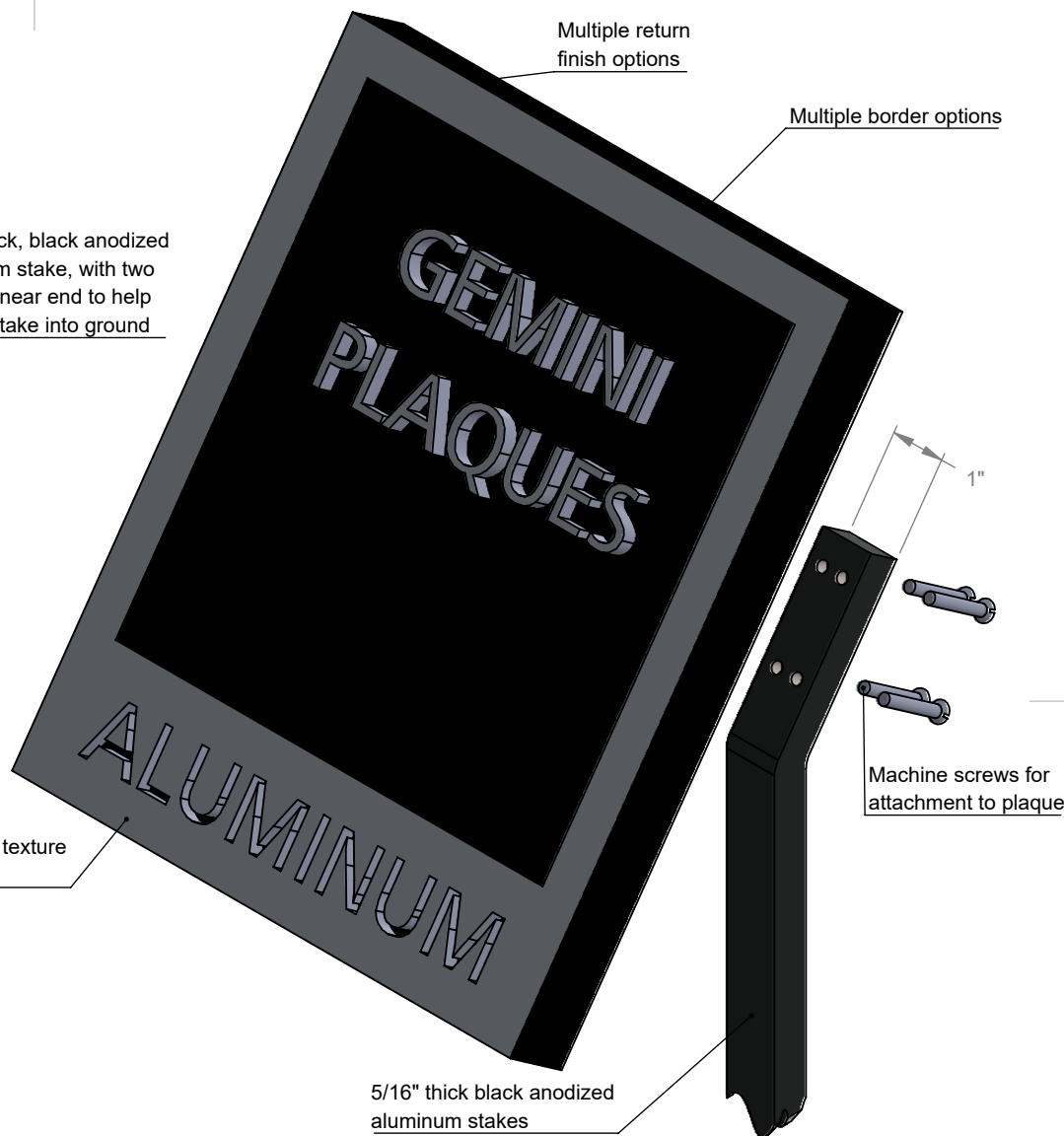


FRONT VIEW II SCALE 2:3



SECTION G-G II SCALE 2 : 3

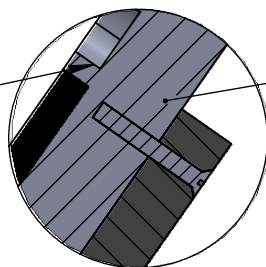
5/16" thick, black anodized aluminum stake, with two notches near end to help secure stake into ground



ISOMETRIC FRONT VIEW II SCALE 3:2

NOTES:
Satin clearcoat standard

Copy raised or recessed 0.07"



Plaque drilled and tapped to receive machine screws

Multiple background texture and color options

DETAIL DW II SCALE 2 : 1

STANDARD PRECISION TOOLED PLAQUE DEPTHS		
MATERIAL	SIZE	DEPTH
Bronze/Brass	Up to 320 sq in.	1/4"
	Over 320 sq in.	5/16"
Aluminum	All sizes	5/16"
Optional thicker tooled or cast plaques available		

NOTES:

- Min. 4" high plaque
- One stake- up to 12" x 8" plaques- max. size
- Two stakes- up to 20" x 8" plaques- max. size
- Optional lengths: 24", 36", and 48" long stakes
- Aluminum stakes are anodized black - designed to be cemented into ground
- Plaque backs are drilled and tapped to receive machine screws

TITLE:

PRECISION TOOLED PLAQUE - GARDEN STAKE MOUNT (TYPE E)

MATERIAL:

METAL

PRODUCT TYPE:

METAL PLAQUE