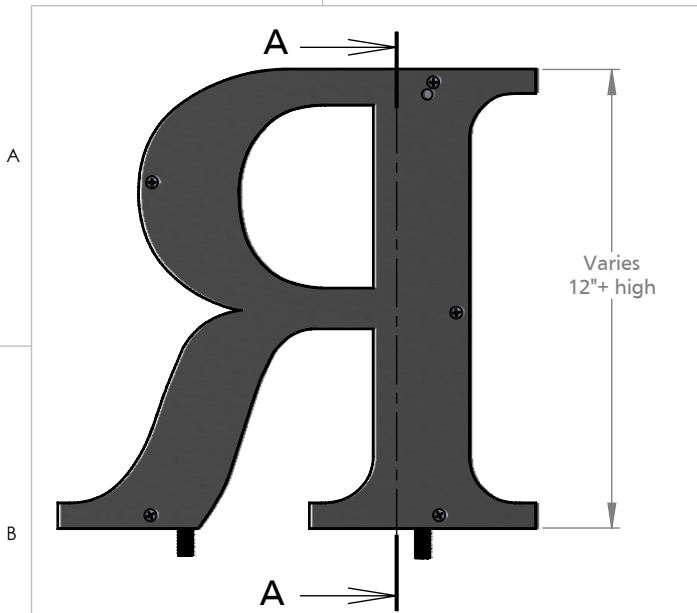
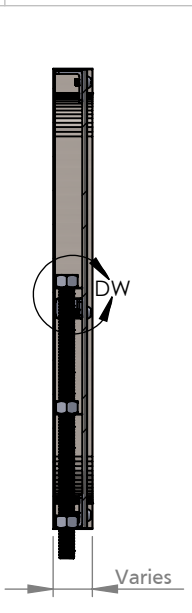


PRODUCT CONSTRUCTION EXAMPLE

1 2 3 4 5 6



BACK VIEW II SCALE 1:5



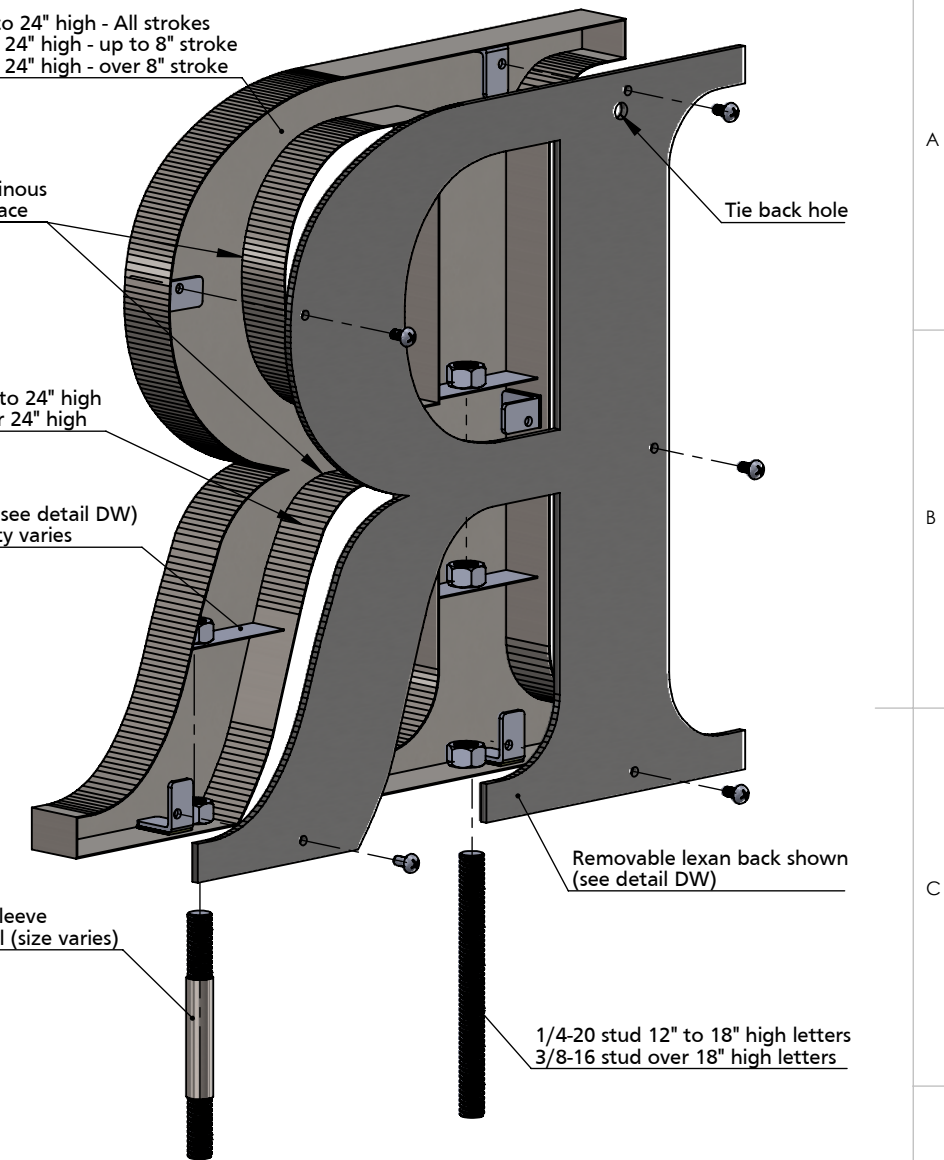
SECTION VIEW A-A II SCALE 1:5

18 gauge face material - 12" to 24" high - All strokes  
 18 gauge face material - over 24" high - up to 8" stroke  
 16 gauge face material - over 24" high - over 8" stroke

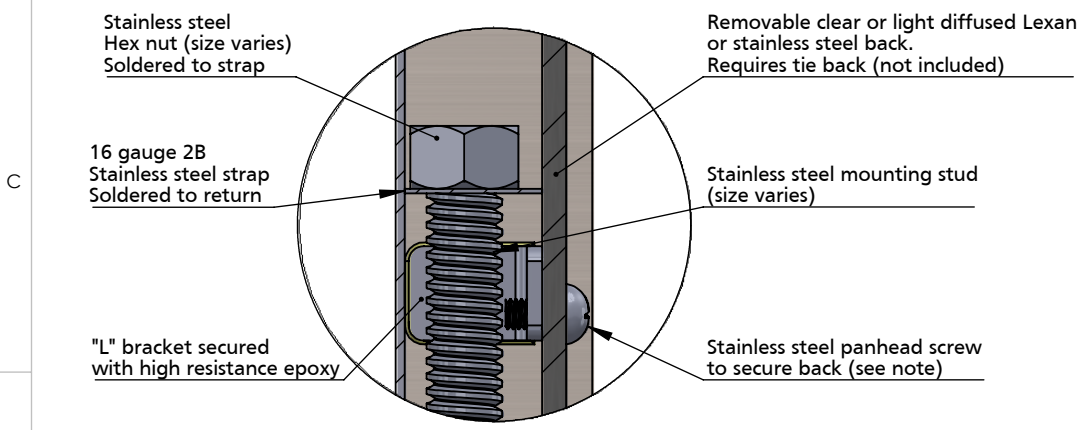
lead free continous solder inside face

24 gauge return material - 12" to 24" high  
 22 gauge return material - over 24" high

Stainless steel strap (see detail DW)  
 Location and quantity varies



ISOMETRIC BACK VIEW II SCALE 1:3



DETAIL DW II SCALE 1:1

Note: Metal back - panhead slightly recessed  
 Lexan back - flush stainless steel screw

**BACK OPTIONS**

- Clear Lexan: 12-24" high - 0.118 thick, over 24" - 0.236" thick
- Light diffused Lexan: 0.177" thick
- Stainless steel - same gauge as face

**MATERIAL OPTIONS**

- Standard - 304 prefinished stainless steel
- Optional - 316 prefinished stainless steel (more corrosion resistant)
- 304 prefinished stainless with titanium coating



|   |  |
|---|--|
| TITLE:<br><b>METAL FACE WITH BACK - ENGINEERED STUD MOUNT</b> |  |
| MATERIAL:<br><b>STAINLESS STEEL</b>                           | PRODUCT TYPE:<br><b>FABRICATED METAL</b> |
| DWG NO. FABL90  | REV 03/24/15                             |
| SCALE: AS INDICATED   | SHEET 1 OF 1                             |