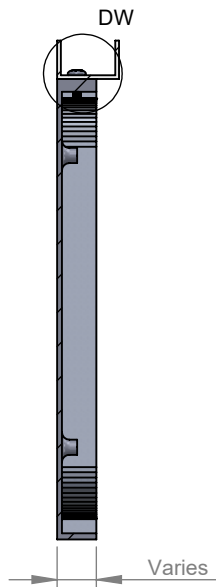
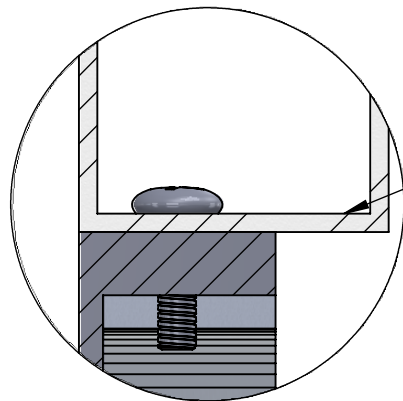


FRONT VIEW II SCALE 1:5

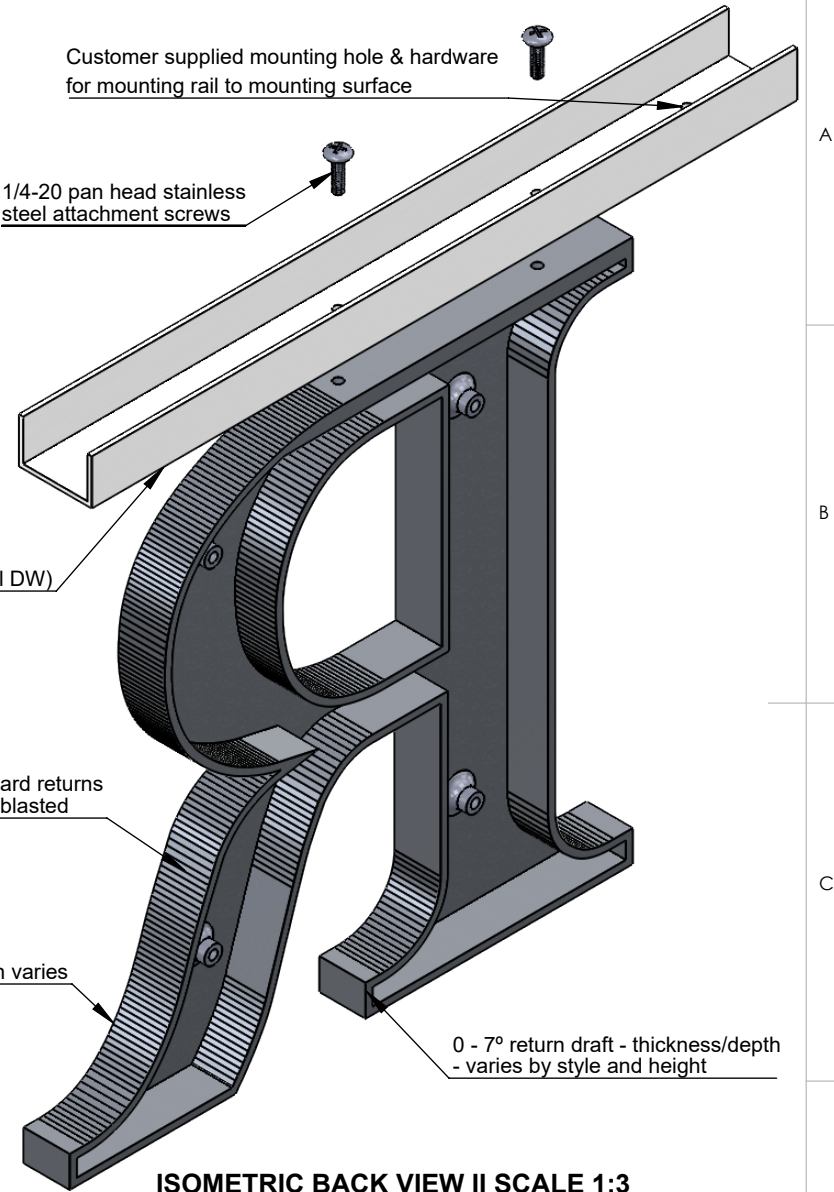


SECTION VIEW A-A II SCALE 1:5



DETAIL DW II SCALE 1:1

C-shape rail (size varies)
Painted or anodized
6063-T2 extruded-aluminum
1/8" wall



ISOMETRIC BACK VIEW II SCALE 1:3

NOTES:

- Letters 4"-24", Minimum 3/8" thick
- Tie back required (not supplied) on letters >8" high
- Letters are mounted by word. Maximum 96" length
- Standard catalog styles or customer per vector art. Flat faced/round/prismatic profile options. Typical 3/16" - 1/4" wall thickness on hollow back letters/logos.
- Letters or logos, standard or custom
- C-Channel (rail)
- 1/2" deep x 1" or 1 1/2" wide x 96" long, painted or anodized
- 1" deep x 2" or 3" wide x 96" long, painted or anodized
- Rails pre-assembled for fit, large letters may ship loose
- Minimum 2 studs per letter
- Round letters (O, C, G, J, Q, S, U) sanded flat - optional
- Rail Mounting
- C-channel rails are designed to be mounted to load bearing structures, holes and location to be determined by installer (rail mounting hardware not included)



TITLE:

CAST METAL TOP RAIL MOUNT

MATERIAL:

ALUMINUM OR BRONZE

PRODUCT TYPE:

CAST METAL