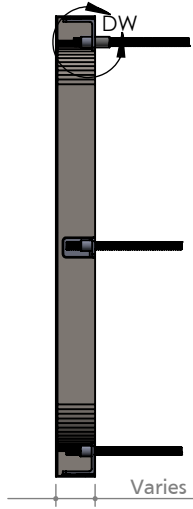
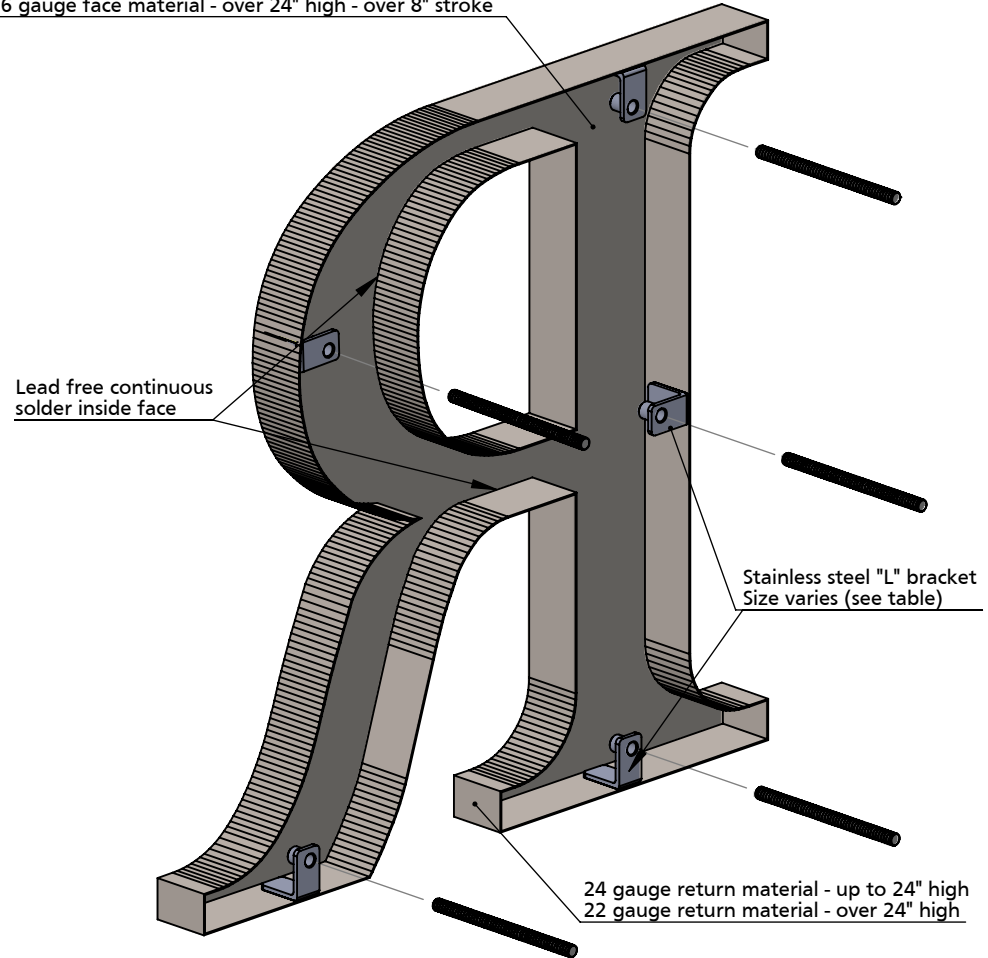


BACK VIEW II SCALE 1:5



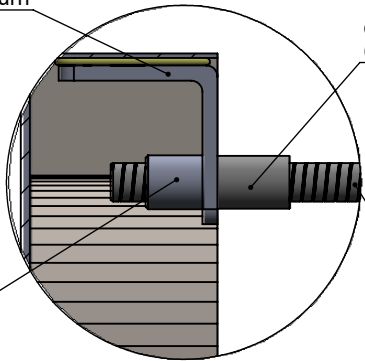
SECTION A-A II SCALE 1:5

18 gauge face material - up to 24" high - All strokes  
 18 gauge face material - over 24" high - up to 8" stroke  
 16 gauge face material - over 24" high - over 8" stroke



ISOMETRIC BACK VIEW II SCALE 1:3

"L" bracket secured with high resistance epoxy to return



Optional spacer sleeve (Size varies)

Stainless steel mounting stud (Size varies (see table))

Threaded Stud Boss (Size varies by bracket)

DETAIL DW II SCALE 1:1

LETTER SIZE	MIN. DEPTH AND STROKE	BRACKET	STUD
up to 6"	0.6"	15 mm	Small 6 - 32
over 6" to 24"	1.0"	25.4 mm	Medium 10 - 24
over 24"	1.75"	44.5 mm	Large 1/4 - 20

MATERIAL OPTIONS  
 Standard - 304 prefinished stainless steel  
 Optional - 316 prefinished stainless steel (more corrosion resistant)  
 - 304 prefinished stainless with titanium coating



TITLE: <b>METAL FACE NO BACK - SIDE MOUNT</b>	
MATERIAL: <b>STAINLESS STEEL</b>	PRODUCT TYPE: <b>FABRICATED METAL</b>
DWG No. FAB10	REV. 10/30/14
SCALE: AS INDICATED	SHEET 1 OF 1