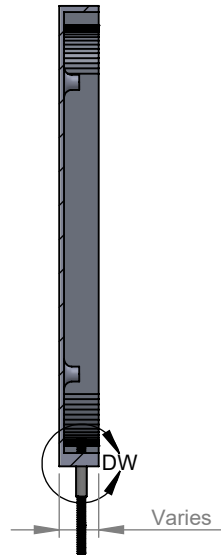
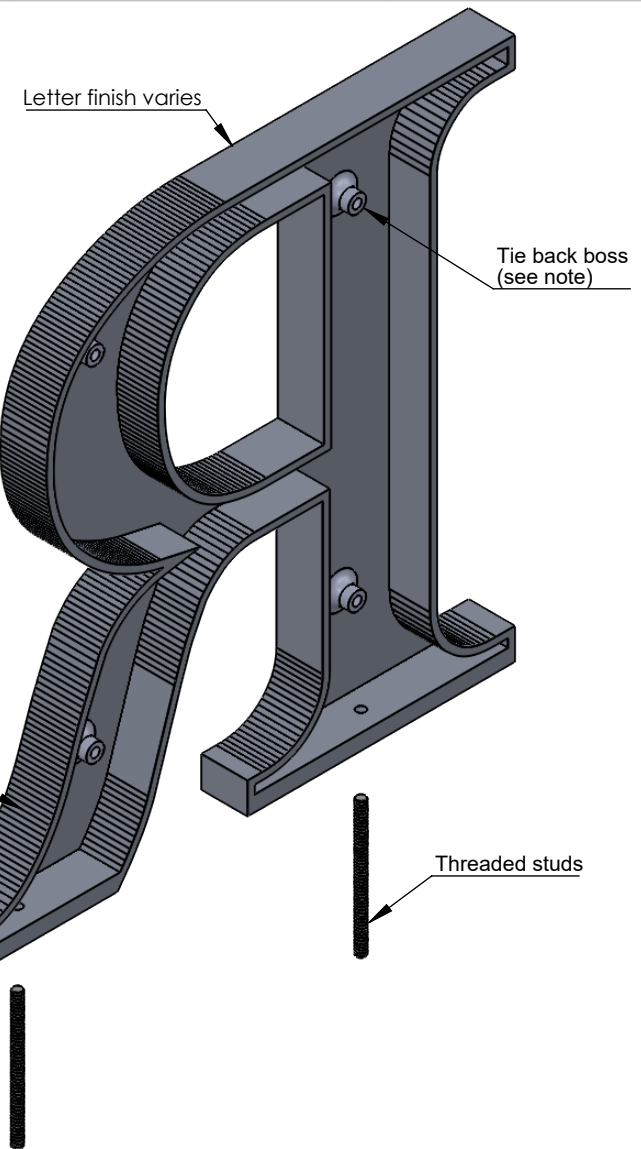
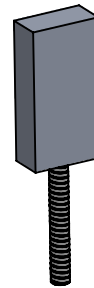


**FRONT VIEW II SCALE 1:5**

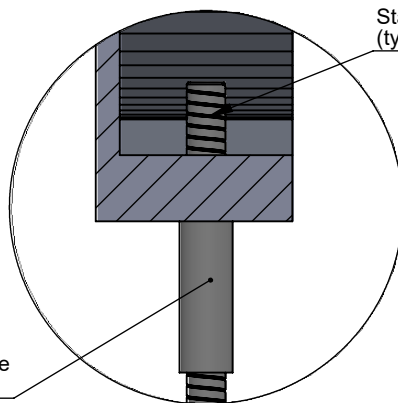


**SECTION A-A II SCALE 1:5**

**NOTE:** Styles with thin strokes or small letters may be cast solid



**ISOMETRIC BACK VIEW II SCALE 1:3**



**DETAIL DW II SCALE 1:1**

Stainless steel stud  
(type and size varies)

Optional spacer sleeve  
(Size varies)

0 - 7° return draft - thickness/depth  
- varies by style and height

**NOTES:**

- Letters 4"-24", Minimum 3/8" thick
- Tie back required (not supplied) on letters >8" high
- Typical stud length 2" beyond bottom of letter
- Round letters (O, C, G, J, Q, S, U) sanded flat on bottom- optional
- Minimum of 2 studs per letter
- 3/8" - 1/2" deep, 4-6" high, 10/24 stainless steel studs
- Over 1/2" deep, or over 6" high, 1/4-20 stainless steel studs
- Standard catalog styles or customer per vector art. Flat faced/round/prismatic profile options. Typical 3/16" - 1/4" wall thickness on hollow back letters/logos.
- Letters or logos, standard or custom



TITLE:

**CAST METAL BOTTOM STUD MOUNT**

MATERIAL:

**ALUMINUM OR BRONZE**

PRODUCT TYPE:

**CAST METAL**