

Premium & MINI Letters

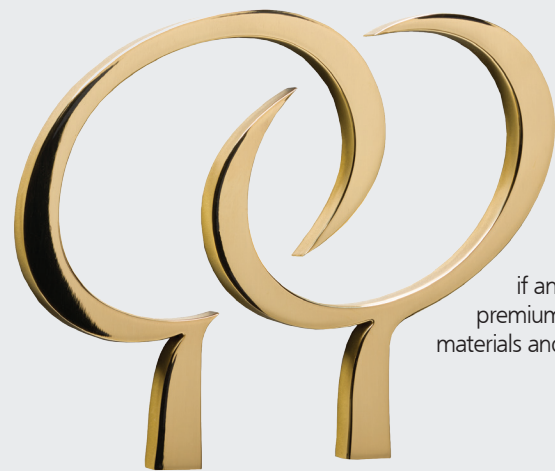
Finishes Flat Cut Metal

Finishes Waterjet Cut Metal

Finishes

Metal Letters & Logos Specifications Guide

Premium

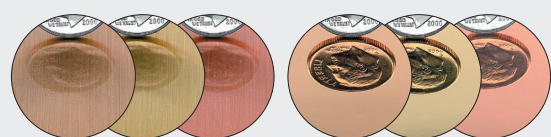


Premium Metal Letters are waterjet or laser cut and then hand sanded on face and returns. Depending on the options you select, the returns may be buffed to a high sheen. The faces are either hand-stroked or polished—in such a way that the returns and faces are perpendicular, so there is little if any rounding of the polished edges. These premium finishes are available in most flat cut out materials and thicknesses—in sizes over 3".

Aluminum & Stainless Steel



Bronze, Brass & Copper



Available Face / Return Finish Options

- Polished Face / Polished Return
- Polished Face / Hand Sanded Return
- Hand Sanded Face / Polished Return
- Hand Sanded Face / Hand Sanded Return

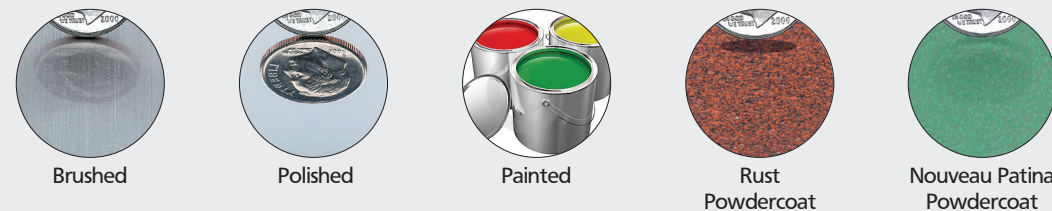
GeMINI Metal Letters (1/8" & 3/16")

Elegantly crafted for interior needs, yet sturdy enough for exterior signage, GeMINI Metal Letters are perfect for extremely small applications when quality is most important. GeMINI Metal Letters are precision-made mini-metal letters that are ideal where the use of extremely small letters is a necessity. Made of the finest grade bronze, brass and aluminum, they are precision cut with crisp, clean edges and smooth, nearly polished returns. GeMINI metal letters are produced in sizes ranging from 1/2" to 2" in height. Aluminum MINI letters come in brushed, painted, anodized or polished finish.

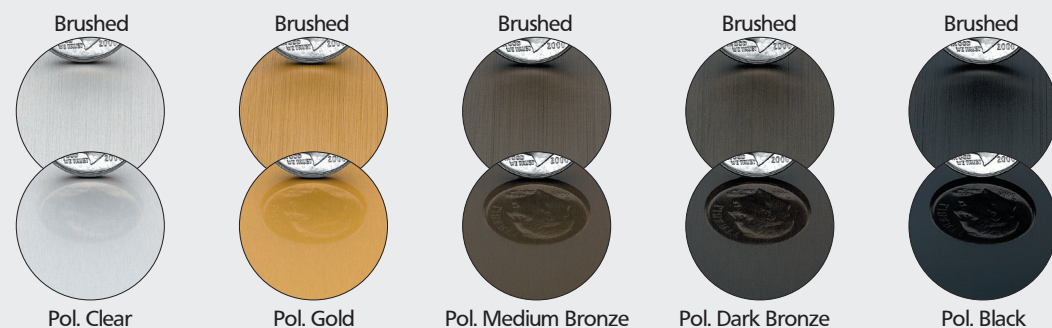


Aluminum (1/8", 1/4", 3/8", 1/2", 3/4" & 1")

Alloy 5052: Alloy #5052 offers good cutting, welding and corrosion resistance. It is also excellent for anodizing and has a superior hardness rating of H32, which prevents surface damage.



Anodized Brushed & Anodized Polished



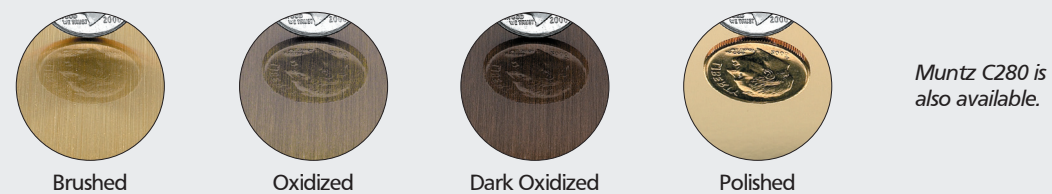
Bronze (1/8", 1/4", 3/8" & 1/2")

Alloy C22000: Alloy C22000 is comprised of 90% copper & 10% zinc - 0% lead.



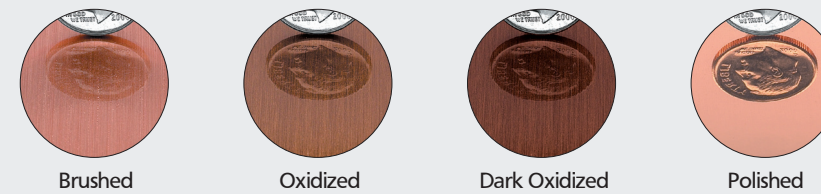
Brass (1/8", 1/4", 3/8", 1/2" & 3/4")

Alloy C46400: Alloy C46400 Naval Brass is comprised of 60% copper, 39.25% zinc and .75% tin - 0% lead.



Copper (1/8", 1/4" & 3/8")

Alloy C11000: Alloy C11000 offers good cutting, welding and corrosion resistance.

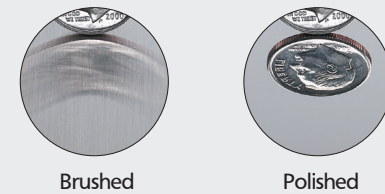


Stainless Steel (1/8", 1/4", 3/8" & 1/2")

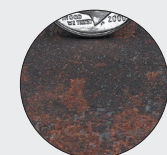
Alloy C304: Alloy C304 offers some corrosion resistance.

Alloy 316: Alloy 316 offers better corrosion and tarnishing resistance for marine and harsh environments.

NOTE: All stainless steel letters and logos are shipped without a clear coating. Alloy C304 will not tarnish under most conditions. In cases where stainless steel letters and logos will be installed in salt water or harsh environments Alloy 316 offers even better corrosion and tarnishing resistance. Using harsh chemicals may cause permanent damage to the materials surface. Clean letters with a soft cloth and warm soapy water, white vinegar or glass cleaner.



Cor-Ten® Steel (1/8" & 1/4")



Natural (with some rust)

Waterjet Cut Cor-Ten® Steel is the ideal material for a rustic or antique look. All Cor-Ten® Steel, by its very nature, will vary from letter to letter and order to order and will form a protective surface coating when exposed to the weather.

Stainless Steel Fabricated

Fabricated Stainless Steel Letters are perfect for retail or architectural letters where high-end quality fabrication is required. They can also be supplied with LEDs to produce illuminated customized signage that is ideal for financial institutions, office complexes and museums. Available in a wide variety of thicknesses, colors & finishes including titanium coating, which offers the look of brass, copper or bronze at a fraction of the cost. Our state-of-the-art lead-free manufacturing process and superior craftsmanship have made these letters some of the industry's finest. More information on stainless steel fabricated letters can be found in the Stainless Steel Fabricated Specifications Guide.



Cast

Premium & MINI

Flat Cut

Aluminum

Alloys 356 & 514: Brushed letters use alloy 356 and are fully coated with a low gloss polyester powder coating. Painted letters use a combination of alloy 356 and 514. Anodized letters use alloy 514. Buffed letters use alloy 514 and have a high gloss polyurethane coating.



ANODIZING: Anodized letters meet the requirements of A43 from the Aluminum Association's Architectural finish thickness standards, by producing an Anodic coating of .8 to 1.0 mils deep. The hardness of the aluminum oxide coating rivals hard stones, giving it greatly improved abrasion resistance. The aluminum oxide surface is also corrosion resistant, making it ideal for industrial, humid and marine atmospheres. Anodized letters are not clearcoated.

Bronze

Alloy NAVY G: NAVY G is a member of the copper/tin alloy family. 88% copper, 8% tin, 4% zinc. **LEAD FREE**



AMERICANA BOLD	2", 3", 4", 6", 8", 10", 12", 15", 18"
ARIAL	4", 6", 8", 10", 12", 15"
ARIAL BOLD	4", 6", 8", 10", 12", 15"
ARCHITECTURAL	2", 3", 4", 5", 6", 8", 10", 12", 14", 16", 18", 24"
AVANT EXTRA BOLD	4", 6", 8", 10", 12", 15"
AVANT GARDE MEDIUM	4", 6", 8", 10", 12", 15"
BODONI CONDENSED	4", 6", 8", 10", 12", 15"
BROADWAY	4", 6", 8", 10", 12", 15"
CLARENDON FORTUNE BOLD	3", 4", 6", 8", 10", 12", 15", 18"
CLARENDON MEDIUM	4", 6", 8", 10", 12", 15", 18"
CLASSIC ROMAN	3", 4", 6", 8", 10", 12", 15", 18"
COPPERPLATE	2", 3", 4", 6", 8", 10", 12"
CRAW CLARENDON CONDENSED	2", 3", 4", 6", 8", 10", 12", 15"
EUROSTYLE BD EXT.	2", 3", 4", 6", 8", 10", 12", 15"
FRIZ QUADRATA	2", 3", 4", 6", 8", 10", 12", 15", 18"
FUTURA BOLD	2", 3", 4", 6", 8", 10", 12", 14", 16", 18"
FUTURA	2", 3", 4", 5", 6", 8", 10", 12", 14", 16", 18"
FUTURA CONDENSED	4", 6", 8", 10", 12", 15", 18"
GARAMOND BOLD	2", 3", 4", 5", 6", 8", 10", 12", 15", 18"
<i>Garamond Bold Italic</i>	4", 6", 8", 10", 12", 15", 18"
GARAMOND REGULAR	2", 3", 4", 6", 8", 10", 12", 15"
Gil Sans Bold	4", 6", 8", 10", 12", 15", 18"
Goudy Extra Bold	4", 6", 8", 9", 10", 12", 15", 18"
Helvetica Bold	4", 6", 8", 10", 12", 15", 18", 24"
HELVETICA BOLDEXT.	4", 6", 8", 10", 12", 15", 18"
Helvetica Medium Condensed	4", 6", 8", 10", 12", 15", 18"
<i>Helvetica Italic</i>	4", 6", 8", 10", 12", 15", 18", 20", 24"
HELVETICA LIGHT	2", 3", 4", 6", 8", 10", 12", 15", 18"
Helvetica	2", 3", 4", 5", 6", 8", 9", 10", 12", 14", 15", 16", 18", 20", 24"
KABEL	2", 3", 4", 6", 8", 10", 12", 15", 18"
Lotus Bold	4", 6", 8", 10", 12", 15"

MICROGRAMMA EXT.	4", 6", 8", 10", 12", 15"
OPTIMA SEMI BOLD	2", 3", 4", 6", 8", 10", 12", 15", 18"
Optima	4", 6", 8", 10", 12", 14", 16", 18", 24"
PALATINO	2", 3", 4", 6", 8", 10", 12", 15", 18", 24"
PALATINO SEMI BOLD	2", 3", 4", 6", 8", 10", 12", 14", 16"
PROFILE	6", 8", 10", 12", 15", 18"
RIBBON	2", 3", 4", 6", 8", 10", 12", 15"
RIBBON DEEP	4", 5", 6", 8", 10", 12", 15", 18"
RIBBON CONDENSED	3", 4", 6", 8", 10", 12", 15"
ROFFE	3", 4", 5", 6", 8", 10", 12", 14", 16"
Roman	2", 3", 4", 6", 8", 10", 12", 15", 18", 24"
ROMAN ROUND	4", 6", 8", 10", 12"
STANDARD BLOCK	3", 4", 6", 8", 10", 12", 15", 18"
Times Bold	2", 3", 4", 6", 8", 9", 10", 12", 15", 18", 24"
<i>Times Bold Italic</i>	4", 6", 8", 10", 12", 15", 18"
Times New Roman	2", 3", 4", 5", 6", 8", 9", 10", 12", 15", 16", 18", 20", 24"
TRAJAN BOLD	4", 6", 8", 10", 12", 15", 18"
TRAJAN BOLD PRISMATIC	4", 6", 8", 10", 12", 15", 18"
TWENTIETH CENTURY	2", 3", 4", 6", 8", 10", 12", 14", 16", 18", 24"
Univers 67	4", 6", 8", 10", 12", 15", 18"
UNIVERSITY ROMAN BOLD	4", 6", 8", 10", 12", 15"

Metal Letter Mounting Methods

